



Reaching out
Reaching within
Proclaiming God's Love

St. Matthew's Episcopal Church

P.O. Box 342
2001 Windsor Drive
Newton, Kansas 67114
Church: 316-283-3310
www.stmatthewsnewton.org
www.facebook.com/stmattsnewton

The Messenger



2
0
2
3

From the Interim Pastor—Fr. Richard Osborne

How does the thief on the cross fit into your theology?

No baptism, no communion, no confirmation, no speaking in tongues,

no mission trip, no volunteerism, no financial gifts,

and no church clothes.

He couldn't even bend his knees to pray.

He didn't say the sinner's prayer and among other things,

he was a thief. Jesus didn't take away his pain, heal his body,

or smite his scoffers.

Yet, it was a thief who walked into paradise

the same hour as Jesus simply by

BELIEVING.

He had nothing more to offer other than his belief

that Jesus was who He said He was.

No spin from brilliant theologians. No ego or arrogance.

No shiny lights, skinny jeans, or crafty words.

No fog machine, donuts, or coffee in the lobby.

Just a naked dying man on a cross

unable to even fold his hands to pray.

“For God so loved the world that He gave His only Son

so that whoever BELIEVES in Him shall not perish

but have everlasting life.” (John 3:16)

That is the good news of the Gospel!





St. Matthew's Vision Statement

St. Matthew's Episcopal Church is living into God's vision for us as a beloved community and disciples of Christ. We are always growing in relationship with God, embracing our neighborhood and our world, and leading through acts of service as a beacon of God's justice and love.

St. Matthew's office hours:

- Monday-Wednesday 10:00 am-3:00 pm
- Thursday 10:00 am-Noon
- Friday 10:00 am-1:00 pm

Fr. Richard is in the office 10:00 am-2:00 pm Monday and Tuesday.

Services: Holy Eucharist 10:15 am every Sunday
Evening Prayer 6:30 pm every Wednesday

The St. Matthew's Vestry's August meeting will be after church on Sunday, August 13, 2023

The Vestry Meeting minutes will be posted on the Vestry bulletin board in the hallway.



AUGUST BIRTHDAYS Baptisms & Confirmations

Remember to pray for each of these persons on their special day

Watch over your children, O Lord, as their days increase; bless and guide them wherever they may be. Strengthen them when they stand; comfort them when discouraged or sorrowful; raise them up if they fall; and in their hearts may your peace which passes understanding abide all the days of their lives; through Jesus Christ our Lord. Amen

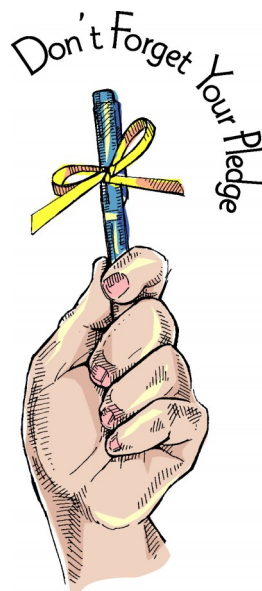
- August 7 - Charles Craig
- August 8 - Daniel Teichler
- August 9 - Darlene Hall
- August 10 - Elizabeth Hill
- August 11 - Benjamin Teichler
- August 12 - Alison Loyd
- August 14 - Clay Hedrick, Jr., Vince Collier
- August 16 - Jerry Jacobson
- August 19 - Gini Johnson
- August 22 - Creed Ekerberg
- August 23 - Connie Osborne, Erin Mills, Maggie Tyner
- August 26 - Paul Bogner
- August 29 - Joe Robb, Taten Penner

August Baptisms

- August 6 - Lance Taylor Woodward, Scott McCloud
- August 24 - Caleb Woodward
- August 29—Mariah Dove, Valerie McCutcheon

August Confirmations

- August 18 - Nyla Friesen





*Sunday, August 20
After church
On the Church Lawn*

Please plan to be here for a fun day to celebrate the end of summer and to celebrate our time together.

There will be food on the grill, games on the lawn, and making memories.

Please invite your family and friends to join us.

Bring a side dish to share.

Hamburgers, hot dogs, etc. will be provided. There will also be tea, lemonade and water available.

There will be corn hole, croquet and other games available for you to try your skill.

Hope to see you all there!



If the weather does not cooperate, we will plan to eat indoors



NAMI Family-to-Family is a free, 8-session education program for family, friends, and significant others of adults with mental health conditions. NAMI Family-to-Family provides information about anxiety, depressive disorders, schizophrenia, bipolar disorder, and other mental health conditions. Other topics covered include communication, problem solving, treatment and recovery.

The course is designed to increase understanding and advocacy skills while helping participants maintain their own well-being. The program is taught this time by three trained family members who have a loved one with a mental health condition. NAMI Family-to-Family is an evidence-based program (EB). For information on the research base for the program, visit nami.org/research.

NAMI Kansas offers the **NAMI Family-to-Family Education Program** free of charge to participants, beginning **Monday, September 11, 2023, through October 30, 2023**. It will be held virtually via Zoom every Monday for 8 weeks from 6:00 pm – 8:30 pm.

NAMI, the National Alliance on Mental Illness, is the nation's largest grassroots mental health organization dedicated to building better lives for the millions of Americans affected by mental illness. NAMI **Kansas** and dedicated volunteer members and leaders work tirelessly to raise awareness and provide essential education, advocacy, and support group programs for people in our community with mental health conditions and their loved ones. In Newton, the NAMI Mid-Kansas Family Support Group meets monthly on the third Thursday at 7:00 P.M. at First Mennonite Church, enter the back door by the playground.

For more information about the Family-to-Family class or the NAMI Family Support Group, please contact co-teacher and support group facilitator, Deacon Barbara Gibson.



A Note from the Senior Warden—Maggie Snow

The Bishop has accepted the proposed Bylaws Changes relating to Vestry Member term changes. As we've recently decreased the size of the Vestry, we need these changes to increase the flexibility to fill the available positions. The Vestry feels that this change strikes the compromise of giving us the flexibility we need, along with ensuring there is regular turnover in the roles so that all can participate.

Special Membership Meeting
Sunday, September 24, 2023
St. Matthew's Day

PROPOSED BYLAWS AMENDMENT

The vestry recommends an amendment to church bylaws to allow vestry members to serve two consecutive three-year terms. The current bylaws require that after serving a three-year term, the member is not eligible for election to the vestry until at least one year has elapsed. A Special Membership Meeting will be held on Sunday, September 24, 2023, to vote on the amendment.

2022 Parish Bylaws
St. Matthew's Episcopal Church
Newton, Kansas
ARTICLE III
PARISH OFFICERS

Section 1. The official title for the legal transaction of this parish is: "The Rector, Wardens, and Vestry Members of Saint Matthew's Parish" and they are the trustees, corporate and politic; and when there shall occur a vacancy in the office of Rector the same rights are vested in the wardens and Vestry Members. The Vestry Members together with Wardens, under the title of "The vestry," shall transact all temporal business of the Parish and take charge of all its property. With the Rector, Vestry Members shall share concern and responsibility for the mission, ministry and spiritual life of the parish.

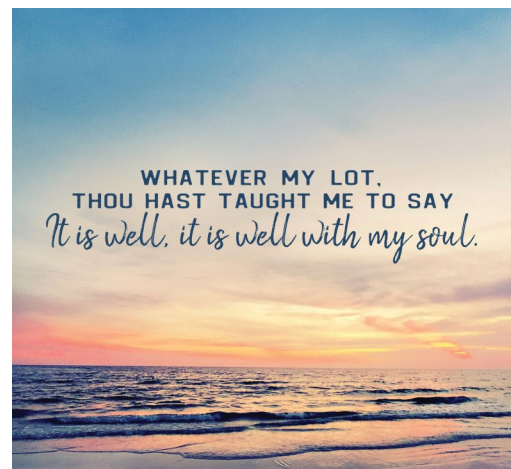
Section 2. There shall be five (5) Vestry Members, one (1) or two (2) of whom shall be elected at each Annual Parish Meeting. ~~Vestry Members shall serve for a period of three (3) years.~~ **The term for each Vestry Member shall be three (3) years. No member of the Vestry shall serve more than two (2) consecutive terms but may again stand for election to a new first term after at least one year has elapsed since the expiration of their second term.** Vacancies occurring in the office of Vestry Member may be filled by the Vestry until the next Annual Parish Meeting, at which time additional Vestry Members shall be elected to fill out the expired terms. Provided, however, that no Vestry Member so appointed by the Vestry shall be ineligible for election to the Vestry at the next Annual Parish Meeting. It is recommended that Vestry Members attend diocesan meetings to become more familiar with the general operation of the Church.

Understanding Heart

In the First Book of Kings God quite pleased with Solomon comes to him in a dream "Ask something of me and I will give it to you." David replied, "I am a mere youth not knowing how to act." remembering his father King David's faithfulness justice and upright heart

Solomon humbly requested "an understanding heart to judge and distinguish right from wrong" So pleased was God that Solomon had not asked for long life riches or the lives of his enemies "I give you a heart so wise and understanding that there has never been anyone like you up to now and after you there will be no one to equal you. In addition, I will give you what you have not asked for such riches and glory there will be none your like."

Joan Breit
Winter 2022



To sign up for publications of the Diocese go to:
https://edok.formstack.com/forms/sign_up

- **The Harvest**, quarterly diocesan magazine sent via US Mail
- **DioLog**, bi-weekly e-newsletter for the diocese
- Bethany House & Gardens e-newsletter
- Youth, Young Adult & Campus Ministry monthly e-newsletter
- Campus Ministry Alumni & Supporters semi-annual e-newsletter



St. Matthew's Outreach

Food Cart

19 non-perishable food items were delivered to the Salvation Army "Harvest of Love" food bank in July.

As everyone is vacationing and having a great summer, please remember that hunger never takes a vacation. Please remember those who don't have enough to eat.

Soldiers & Shut Ins

If you have a relative or loved one that you would like to put on either of our boards in the parish hall, please let Melissa know. A picture and a few details are always great! These people will receive visits and cards.

Back to School in July

Totals soon.

Upcoming Outreach

September - New Hope Shelter
Details soon!



- August 20—Sunday—End of Summer Cookout
After church. Bring a dish to share. Invite your friends and family
- September 23—Saturday—Parish Council—
Be there to help plan our calendar through the end of the year. We need everyone's voice!
- September 24—Sunday—St. Matthew's Day
There will be a church potluck plus an important meeting to vote on a change to our Bylaws. Please plan to be here!
- October 7—Saturday—Blessing of the Animals
Bring your pets to be blessed!
- October 12—Thursday—Taste of Newton
Details pending

August 2023 Coffee Hour Hosts

- August 6 - Mary Anne & Scott McCloud
- August 13 - Bonnie Jones and Sarah Teichler
- August 20 - End of Summer Cookout
Bring a side dish to share
- August 27 - Melissa Keenan



Wow! It is fun to host coffee hour. A committee or group can host.... you can buddy up with a friend, or you can go solo! It is fun to bring your favorite treat, showcase a dessert, or bring crackers, or cookies. We are not picky!! We enjoy it all! If you cannot host and would like to help, a donation of cookies, or a monetary donation to offset the cost of supplies is always appreciated. Thank you.



Card
Ministry

Note change of date:

The Card Ministry group will be meeting on **Monday, August 7** at 1:00 pm at the church. Please join us! All you need to bring is yourself, as all the materials will be provided. Hope to see you there!

We have a request from Debbie Eickbush, the daughter of Fr. Bob Layne who was a former Pastor at St. Matthew's, for Birthday cards to be sent to her to give to Fr Layne on his 90th birthday, August 28th.

Fr. Layne is in Cedar's Nursing Home in McPherson, KS.

Connie and I had the wonderful occasion to visit Fr. Bob last week and he spoke fondly of his memories at St. Matthew's and he sends his Greetings and Best Wishes to you!

Please join us in sending birthday cards to Fr. Bob Layne:

Please send them to his daughter's address:

Fr. Bob Layne
c/o Debbie Eickbush
P.O. Box 1007
McPherson, KS 67460



Social Media Engagement for July 2023

Here are our Social Media Engagement Statistics for the month of July!

Facebook	
Reach	255 People
Page Visits	70 Unique Visits
Engagement	90 Unique Engagements
New Followers	2 New Followers
Facebook Live	
3 Second Views	153
1 Minute or More	16
Audience Breakdown	90.2% Followers, 9.8% Non-Followers
YouTube	
Views	0
Unique Views	0
Check us out on the Web at these links.	
stmatthewsnewton.org —visit our webpage	
facebook.com/stmattsnewton —like our Facebook page and join us here Live on Sundays and Wednesday evenings	
youtube.com/@stmatthewsepiscopalnewton — Subscribe and join us here Live on Sundays	

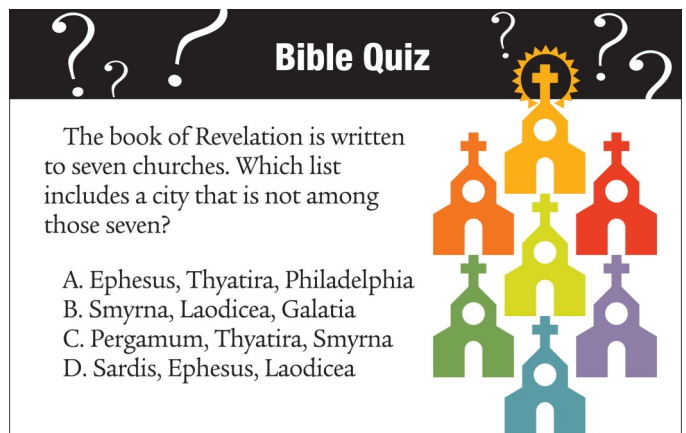
News from the St. Matthew's Payee Program

Hello everyone, this is just a note to express my thanks for the donations members of St. Matthew's provide to the St. Matthew's Payee Program through the Dillons Community Rewards Program. Those donations are deposited in the Client Needs Fund of the Payee Program. The Client Needs Fund is a blessing to our clients that are confronted with unexpected expenses that exceed their budgets. Funds from the Client Needs Account often pay for transportation, medical, and unforeseen emergency situations. We also use the Client Need Fund to pay veterinary expenses as more of our clients have pets and those expenses exceed their budgets. I am not aware of any other payee programs that have a fund such as the Client Needs Fund that assists payee clients with maintaining living independently in the community. Just this past week we have used money from the Client Needs Fund to place a woman, homeless in Winfield, temporarily in a motel until she begins receiving her Social Security benefits. The Client Need Fund is a blessing for our clients and please know that your contributions through the Dillons Community Rewards Program is so appreciated. Please consider using the Dillons Community Rewards Program for your charitable giving if you don't already do so, and consider your donations being directed to the St. Matthew's Payee Program. Again, thank you for your prayers and financial support for the St. Matthew's Payee Program. Blessings.

Fr. Mike Loyd



Please join Deacon Barbara and company for Evening Prayer every Wednesday at 6:30 pm in the St. Matthew's Covey Chapel. Or join us on Facebook. Everyone is welcome. Come take a few minutes to end your day with prayer.



Bible Quiz

The book of Revelation is written to seven churches. Which list includes a city that is not among those seven?

- A. Ephesus, Thyatira, Philadelphia
- B. Smyrna, Laodicea, Galatia
- C. Pergamum, Thyatira, Smyrna
- D. Sardis, Ephesus, Laodicea

Answer: B (See Revelation 2-3)



St. Matthew's Prayer Chain

If you have a request for prayers for yourself or others, please contact

Mary Upton at **316-841-1736**. The information you share with me will then be passed on to the chain leaders who will then pass the information on to their team. The members of the chain will then add your request to their prayers. The information you give me is confidential and will not be shared with others outside the prayer chain without your permission.

If you have a prayer request, would like more information and/or join the St. Matthew's Prayer Chain, please contact Mary Upton at **316-841-1736**.



LET'S FILL UP THE ST. MATT'S FOOD PANTRY.



The pantry is outside, at the entrance to the parking lot. Some suggested items: cereal, canned goods, jelly, mac and cheese, boxed meals, spaghetti, easy muffin mixes, etc. Please consider the weather when leaving your items. Thanks for helping our neighbors.

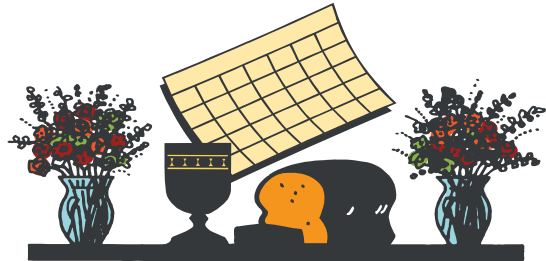
We have two openings for the giving of Sunday Altar Flowers, on the following dates:

- June 11, 2024 - Open
- August 13, 2024 - Open

We schedule the flower list for the year, Please let me know if you would like to give flowers for "Blessings Received", "In loving memory of someone" or other thoughts!

The cost for the two arrangements, delivery and container is \$44.00. Ruzen's will send a bill to the individual giving the flowers.

Twila Lockaby, 316-215-1164



ALTAR GUILD

Altar Guild Team for August

Twila Lockaby, Scott McCloud,
Maggie Snow and Ruth Cooper

Altar Flowers for August 2023

August 6

Mary Anne and Scott McCloud

"For blessings received"

August 13

Ethan Moulds

"In loving memory of Grandmother Barb Moulds"

August 20

Elizabeth Hill

"In loving memory of Mary and Elmer Weyand"

August 27

Rich Stinnett and Charlie Robinson

"For blessings received"

How far you go in life depends on your being tender with the young, compassionate with the aged, sympathetic with the striving and tolerant of the weak and strong. Because someday in your life you will have been all of these.

—George Washington Carver



RAILWAY CLUBHOUSE

Railway Clubhouse opened on June 5, 2023, as the newest of 3 clubhouses operated through Breakthrough/Episcopal Social Services Wichita. After operating for three weeks, the members selected Railway Clubhouse as the name for their Clubhouse. We are seeking to become a fully accredited Clubhouse according to Clubhouse International to ensure the highest level of support possible to our members.

Our overall goals include:

- focusing on wellness and abilities rather than illness and disabilities;
- providing a safe harbor for those who have a mental illness; and
- offering support for members to become independent, productive, challenged and accepted.

We assist individuals in their mental health recovery through friendships and meaningful work.

What is a Clubhouse?

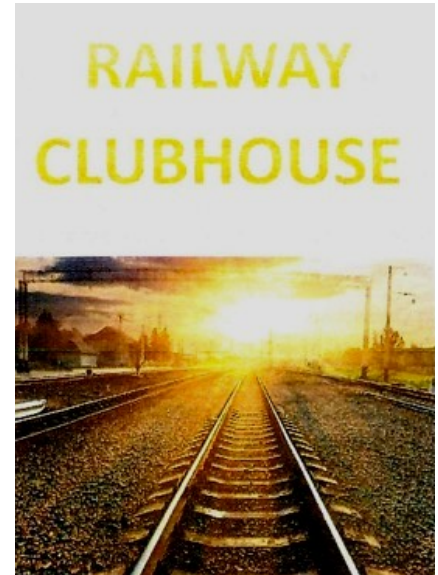
A Clubhouse provides a restorative environment for those living with severe mental illness. Clubhouses reduce isolation and offer support through friendship, employment and education, and connection to community services needed to continue in recovery. Clubhouse membership is free, voluntary and without time limits. It carries with it four guaranteed rights:

- A place to come
- Meaningful relationships
- Meaningful work
- A place to return

Railway Clubhouse Discussions with St. Matthew's

The vestry voted on July 30 to consider sharing space with the new Clubhouse if another location cannot be found.

“The start-up location at First Christian Church has allowed us to get off to a great start,” says program director, David Kapten. However, First Christian may not be able to accommodate the expanded schedule and social events.



David Kapten, Program Director,
Railway Clubhouse
david.kapten@breakthroughwichita.org

Current Hours

Mondays and Thursdays—10:00 AM until 2:00 PM
Located on the north side of
First Christian Church
102 E. 1st St.
Newton, KS



EfM Participant Registration '23-'24

Previous EfM Participants are ready to continue. Are there others interested in enrolling?

<https://efm.pathwright.com/library/efm-participant-registration-23-24-200852/522600/path/>

Cohort: Gibson StMatts 2023

Fee: \$325.00

The full year's fee is paid at the time of enrollment using the program's online registration and payment system.

We are sponsored by the Diocese of Kansas and will pay a discounted fee of \$325. You may qualify for a scholarship supported by St. Matthew's Permanent Endowment Fund.

Contact Deacon Barbara for more information.

Payment is made with a debit or credit card using the online payment service included in the online registration system.

Enrollment is not complete until the payment is made and accepted.

The payee will appear on your credit card statement as **The Beecken Center**.

Written instructions: <https://docs.google.com/document/d/1X4UdnPAEae22JA9WGA1-MNNHIVT26Y5n732X020B0QY/edit?usp=sharing>

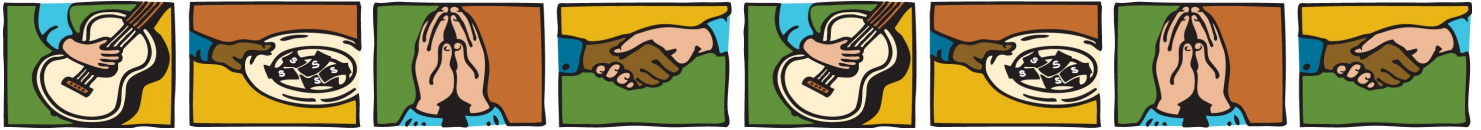
Video instructions: <https://www.loom.com/share/87ae1b491ce345cd9c8cd701d5f3b440?sid=cce1c83f-29d2-4d49-9e00-31a75710b6bd>

The EfM Reading and Reflection Guide (RRG) for the current year is provided to all in both e-book and printed formats. Participants are responsible for obtaining new or used textbooks for the year at their own cost. [See the texts used in the program here.](#) We have many books available from former students, check with Deacon Barbara about locating books you may borrow or have donated, or if you have questions.



Education for Ministry (EfM) is a unique four-year distance learning certificate program in theological education based upon small-group study and practice. Since its founding in 1975, this international program has assisted more than 120,000 participants in discovering and nurturing their call to Christian service. EfM helps the faithful encounter the breadth and depth of the Christian tradition and bring it into conversation with their experiences of the world as they study, worship, and engage in theological reflection together.

The program invites participants into small, mentored groups that provide the framework for understanding life and shaping actions as Christian faith is deepened. EfM seminar groups meet in local settings and online, and provide a four-year curriculum that develops a theologically informed, reflective, and articulate laity.



Here is the worship schedule for August. Please let the office know if you would like to sign up to read, usher and/or count. We can always use more hands! ***If you are unable to serve when you are scheduled, please find a substitute.*** Thanks for your service!

	August 6	August 13	August 20	August 27
Season	The Transfiguration of our Lord Jesus Christ	11th Sunday after Pentecost	12th Sunday after Pentecost	13th Sunday after Pentecost
Service	Holy Eucharist	Holy Eucharist	Communion in the absence of a Priest (ComAP)	Holy Eucharist
Leaders	Fr. Richard Osborne	Fr. Richard Osborne	Deacon Barbara Gibson Maggie Snow	Fr. Richard Osborne
Lectors	Elizabeth Hill	Bonnie Jones	Jeremy Kitto	Fred Schroeder
Counters (2)	Twila Lockaby	Fred Schroeder	Mary Upton	Margie Knupp
	Margie Knupp	David Simmonds	Twila Lockaby	Fred Schroeder
Ushers (2)	Mary Upton	Melissa Keenan	Bonnie Jones	Bonnie Jones
	Elizabeth Hill	Rick Glover	Elizabeth Hill	Mary Upton
Hosts	Mary Anne and Scott McCloud	Bonnie Jones and Sarah Teichler	End of Summer cook out	Melissa Keenan
Altar Flowers	August 6 Mary Anne and Scott McCloud "For blessings received"	August 13 Ethan Moulds "In loving memory of Grandmother Barb Moulds"	August 20 Elizabeth Hill "In loving memory of Mary and Elmer Weyand"	August 27 Rich Stinnett and Charlie Robinson "For blessings received"
Acolyte & LEM	Fred Schroeder	Karen Wall		Maggie Snow
Organist	Chris Teichler	Chris Teichler	Chris Teichler	Kelli Glann

Would you like to serve as Usher, Counter or Lector? Or serve the church in some other way? Contact the Office!